



**ClipDisk
MPEG-2 HD Player (19“)**

There is no doubt that high resolution digital images provide a significant step forward to superior video shows needed in the advertisement and presentation market. Addressing various application scenarios the ClipDisk is an universal single-channel 'workhorse', which easily could be configured for complex multichannel solutions.

Beside standalone playback, synchronisation-over-IP allows to combine multiple ClipDisks for frame-accurate playback in 3D, split-screen and video-wall application using standard 100BaseT network. For performing 3D/48Hz on a single projector one ClipDisk-112 could playback in a pixel-accurate mode (± 16 Pixel).

A sophisticated GUI allows to configure and to control ClipDisk over IP-network, including grouping of multiple player into a cluster and controlling playback of clusters.

Featuring automated playback using XML playlist format including show control mechanisms the ClipDisk combines flexibility with reliability, approved by various customers.



	ClipDisk-111	ClipDisk-112/3/4
HD channels	1	2/3/4
Form factor	19" 1RU	19" 4RU
Linux / Win XP	yes / opt.	yes / opt.
Frame Sync Option	yes	yes
Pixel Sync Option	yes	yes

**YOUR PARTNER
FOR PROFESSIONAL
HD SOLUTIONS**

KEY FEATURES

Compact, standalone, remote-controllable multi-channel MPEG-2 HD Player

SD/HD playback, TS/PS file formats, Broadcast/D-Cinema bitrates

Intuitive GUI to configure/control all player functions over IP (MM_Player)

XML-playlist supporting show control

Date/Time-scheduled full-automated playback

Configuration, control and synchronisation over IP network

Unsynchronized, frame-accurate and pixel-accurate playback modes

Upgradeable and customizable hardware architecture

APPLICATIONS

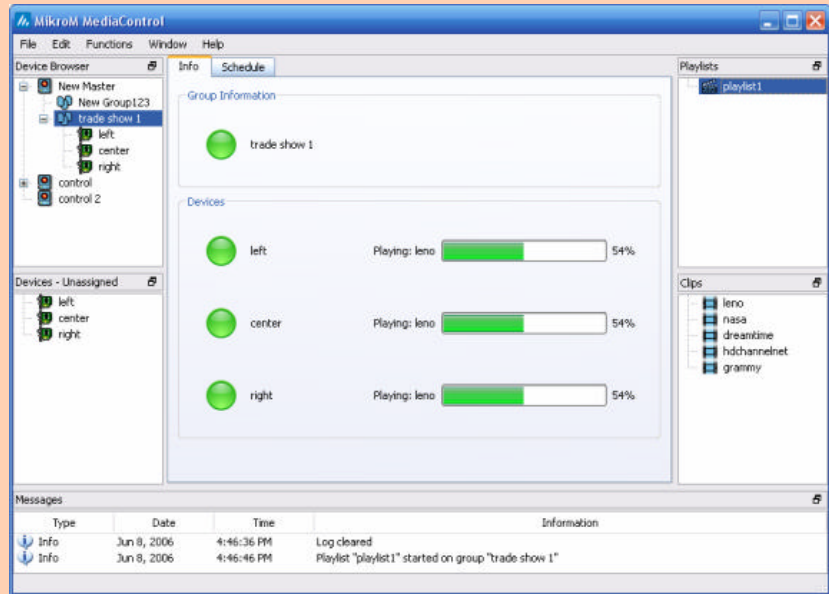
Trade show, exhibition, museum, theme park, special venue

Split-screen, Video wall

3D on single display / multiple displays

48...96Hz on single display

POS/POI application



Player Application

TECHNICAL SPECIFICATION

AUDIO, VIDEO AND FILE FORMATS

MPEG-2 MP@HL (ISO/IEC 13818)
TS, PS

1080/30p, 1080/60i, 1080/25p, 1080/50i,
1080/24p, 1080/24sf, 720/60p, 720/50p,
576/50p, 576/50i, 480/60p, 480/60i

1/1.001 frame rates supported

Video Up/Down-Scaling

Reverse 3:2 Pulldown

MPEG-1 Layer II, SMPTE302M, Dolby E
(AC-3, AAC, DTS optional)

HARDWARE

Intel Celeron 2.0 GHz

Min. 256 MB memory

200 GB HDD
(5 h @ 80 Mbps or 20 h @ 20 Mbps)

1 VGA, 2 1000BaseT, 2 USB2.0,
1 RS232, LPR, KBD, Mouse

SOFTWARE

OS Linux Kernel 2.4
(Win XP on request)

Linux/Windows GUI for remote control
and configuration via IP network

Hierarchical player management

Playback control (Play, Stop, Pause, ...)
of single player or clustered players

XML-playlists supporting
show control

Player setup and network configuration

Player SDK for system integration

OPTIONS

SD/HD-SDI video output

Synchronization over IP network (Software)

Cable/Satellite receiver card (also with CI)

ASI Transceiver card

WLAN, Fibre-Channel

HD-DVD (as available)

AUDIO / VIDEO OUTPUTS

Analog/Digital Video Output: DVI-I

Analog Audio Output: Stereo line out, 2 RCA

Digital Audio Output: Optical TosLink,
Bitstream/Stereo

AUDIO/VIDEO OUTPUTS (SDI)

Digital Video Output: SD/HD-SDI

Digital Audio Output:
Optical TosLink, Bitstream +
8ch AES/EBU digital, SMPTE302M

PHYSICAL AND POWER

Dimensions: 19" x 1RU/4RU

Power: 95-250 VAC, 47-63 Hz, 200 W

OPERATING CONDITIONS

Temperature: 0°C to 45°C (32°F to 113°F)

Rel. Humidity: 5 to 90% (non-cond.)

Cooling: Forced airflow cooling

COMPLIANCE

CE, FCC, UL, CUL, BSMI, CB, NEMKO,
TUV, CCC

DVC DIGITALVIDEO COMPUTING

DVC Digitalvideo Computing
Seestr. 7

D-82211 Herrsching

Tel: 08152 93010

Fax: 08152 91331

info@digitalvideo.de

www.digitalvideo.de

Powered by



DVC maintains a policy of product improvement and reserves the right to modify the specifications without prior notice.